

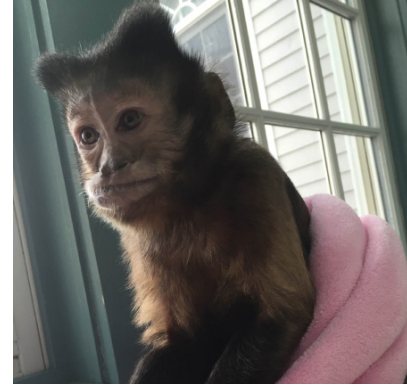


## CARING FOR OUR MONKEYS TODAY AND INTO THE FUTURE

Since 1979, Helping Hands: Monkey Helpers has been helping adults with spinal cord injuries and other mobility impairments live more independent and engaged lives.

One of our core programs includes an aftercare component dedicated to caring for retired service monkeys. Of the 115 program monkeys, a growing number have transitioned into retirement due to their age or health-related reasons.

Here at Helping Hands: Monkey Helpers, we are committed to providing them with the highest level of care throughout their lives since they have given so much to so many over the years.



## YOUR SPONSORSHIP WILL PROVIDE:

- Veterinary Services
- Food
- Shelter
- Daily care: bathing, grooming
- Staffing time to monitor wellbeing
- Supplies: toys, vitamins, blankets

## JOIN US!

Become a sponsor for one of these precious monkey helpers.

Your sponsorship will play a key role in helping us to continue providing care for retired monkeys. Funds will go directly towards aftercare programs and services.









## CONTACT US

Joshua Claudio  
*Director of Development*  
Email: [joshuac@monkeyhelpers.org](mailto:joshuac@monkeyhelpers.org)  
Phone: (617) 787-4419 x 113

**Enroll Today!**

By Mail: [monkeyhelpers.org/sponsor-monkey-program](http://monkeyhelpers.org/sponsor-monkey-program)  
Online: [monkeyhelpersdonate.org/sponsor](http://monkeyhelpersdonate.org/sponsor)

# SPONSOR A MONKEY LEVELS AND BENEFITS

	Legacy Sponsor (\$5,000)	Supporting Sponsor (\$2,500)	Friend Sponsor (\$500)	Companion Sponsor (\$250)
Personalized monkey profile				
Adoption certificate				
Sponsorship plaque on wall of supporters	* 			
Plush monkey mascot				
Annual report recognition				
Website and social media visibility				
Monkey College tours for up to four people <sup>†</sup>				
Half-hour lunch session with monkey trainer <sup>‡</sup>				
Newsletter spotlight				

\* Positioned on top row

† Tours must be scheduled four weeks in advance and only on Tuesday, Wednesday, or Thursday

‡ Lunch session is paid for by Helping Hands and is an opportunity to talk about programs and services

## MONKEYS FOR SPONSORSHIP

Over 40 years, our highly trained capuchin monkeys have provided increased independence, joy, and hope to our recipients. Did you know that thanks to exceptional care, our monkeys can have a life expectancy of 35-40 years?

Your sponsorship supports our growing group of retired monkeys. We are committed to providing the best care for our older monkeys who spent so many years caring for others. Like us, older monkeys look forward to spending their golden years playing with their monkey friends and trainers and lounging in the sun. They can also develop health issues related to their age and require additional veterinary care to ensure they are comfortable during retirement.

Your sponsorship ensures the monkeys will continue to be given exemplary care in the years to come.



## SPONSOR BECKY

**Year of Birth:**

1983

**Favorite Treat:**

Chicken

**Best Friend:**

Lucy

**Nickname:**

Noodles, Snoods

**Toys:**

Anything with holes to hide things in!

**Most entertaining behavior:**

Becky loves a long hot soak in the tub. She'll stay in there until her fingers and toes prune up.

**Favorite quirk:**

This little lady is quite energetic, active, and attention-seeking. Becky considers herself the "Queen B" of Helping Hands!

**Enroll Today!**

By Mail: [monkeyhelpers.org/sponsor-monkey-program](https://monkeyhelpers.org/sponsor-monkey-program)  
Online: [monkeyhelpersdonate.org/sponsor](https://monkeyhelpersdonate.org/sponsor)

# SPONSOR A MONKEY ENROLLMENT FORM

## CONTACT INFORMATION

1. Contact Name: \_\_\_\_\_  
Company name (if applicable): \_\_\_\_\_  
Address: \_\_\_\_\_  
Email address: \_\_\_\_\_ Phone: \_\_\_\_\_

## SPONSOR LEVELS

2.  Legacy Sponsor (\$5,000)  Supporting Sponsor (\$2,500)  Friend Sponsor (\$500)  
 Companion Sponsor (\$250)  I cannot sponsor but enclosed is a donation  
Please type or print information exactly as it should appear in recognition lists.  
Sponsor name(s): \_\_\_\_\_

## PAYMENT OPTIONS

3.  I will mail a check payable to:  
[Helping Hands: Monkey Helpers, 541 Cambridge Street, Boston, MA 02134](#)  
 Enclosed is the full amount of my sponsorship  Invoice me monthly  
 Please charge my credit card: Visa Mastercard AMEX Discover  
Card Number: \_\_\_\_\_ Expiration Date: \_\_\_/\_\_\_ CSV Code: \_\_\_\_\_  
Name on card: \_\_\_\_\_  
Signature: \_\_\_\_\_

## **CONTACT US**

Joshua Claudio  
*Director of Development*  
Email: [joshuac@monkeyhelpers.org](mailto:joshuac@monkeyhelpers.org)  
Phone: (617) 787-4419 x 113

**Enroll Today!**

By Mail: [monkeyhelpers.org/sponsor-monkey-program](http://monkeyhelpers.org/sponsor-monkey-program)  
Online: [monkeyhelpersdonate.org/sponsor](http://monkeyhelpersdonate.org/sponsor)



# HELPING HANDS

## MONKEY HELPERS

THIS CERTIFIES THAT

---

is a proud sponsor of a  
Helping Hands: Monkey Helper

---

SPONSORSHIP YEAR

---

ANGELA LETT  
EXECUTIVE DIRECTOR

---

SPONSORED MONKEY

---

ALISON PAYNE  
DIRECTOR OF MONKEY CARE

